

Featuring VERDANT LUSH by Deborah Valesquez

VERDANT VALLEY

Designed by Lucy Fazely

QUILT 46" x 56"



FREE PATTERN

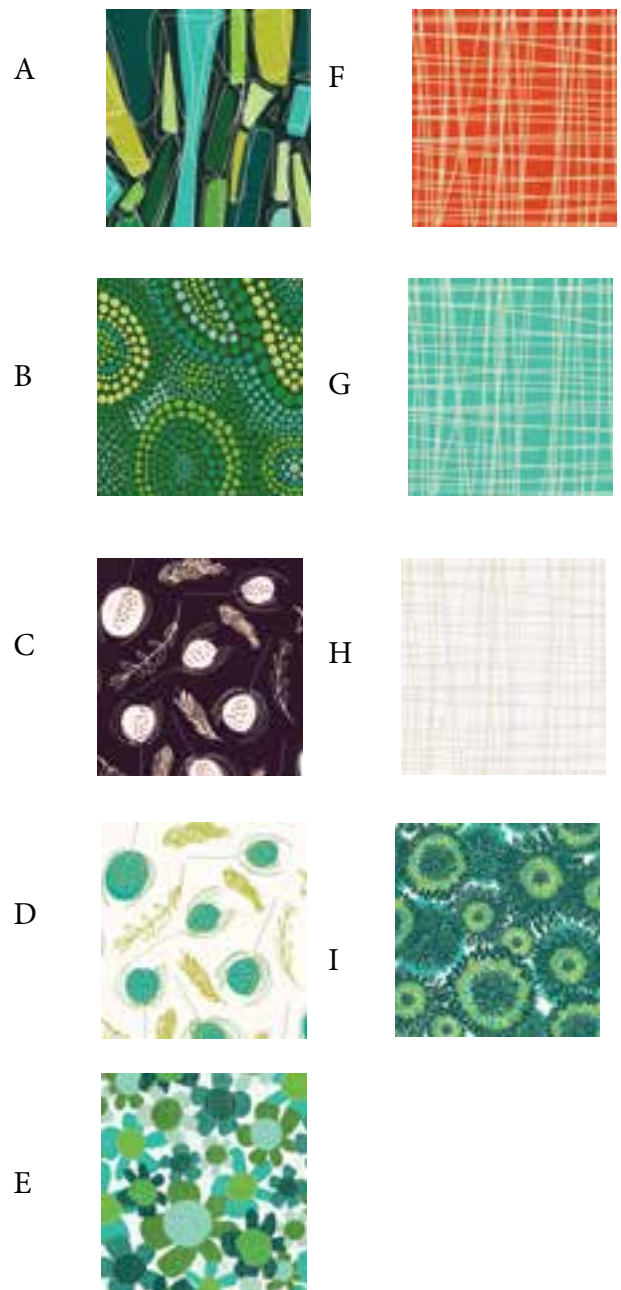


VERDANT VALLEY

QUILT

Designed by Lucy Fazely

FABRIC REQUIREMENTS



Verdant Valley
Quilt size: 46" x 56"
Block Size 9" squares

Fabric Requirements:

A: GLASS GREEN RBS.VL 2940-09	1/4 yard
B: MOSAIC GREEN RBS.VL 2950-09	3/8 yard
C: POD VIOLET RBS.VL 2930-30	1/4 yard
D: POD WHITE RBS.VL 2930-02	7/8 yard
E: RETRO MIX WHITE RBS.VL 2920-02	3/8 yard
F: VISION ORANGE RBS.VL 2960-10	1/4 yard
G: VISION TURQUOISE RBS.VL 2960-29	1-1/8 yards
H: VISION WHITE RBS.VL 2960-02	1-1/8 yards
I: ZINNIA TEAL RBS.VL 2910-20	1/4 yard

Backing: 3-1/8 yards
Batting: 54" x 64"

All seams are sewn with 1/4" seam allowance.
Press seams to darker fabric.



1/4" / 6.5cm Seam Allowance
WOF: Width of the Fabric

CUTTING DIRECTIONS

Cutting Instructions:

- A: Cut (1) 5" x WOF strip, subcut (4) 5" squares
- B: Cut (2) 5" x WOF strips, subcut (12) 5" squares
- C: Cut (2) 2" x WOF strips, subcut (40) 2" squares
- D: Cut (5) 5" x WOF strips, subcut (40) 5" squares
- E: Cut (2) 5" x WOF strips, subcut (16) 5" squares
- F: Cut (2) 2" x WOF strips, subcut (40) 2" squares
- G: Cut (5) 3" x WOF strips for outer border
Cut (6) 2-1/2" x WOF strips for binding
- H: Cut (4) 2" x WOF strips, subcut (80) 2" squares
Cut (3) 1-1/2" x WOF strips for inner border
Cut (10) 1-1/2" x WOF strips, subcut (2) 1-1/2" x 41-1/2" borders, (4) 1-1/2" x 39-1/2" horizontal sashing strips, and (15) 1-1/2" x 9-1/2" vertical sashing strips
Cut (5) 1-1/4" x WOF strips, subcut (160) 1-1/4" squares
- I: Cut (1) 5" x WOF strip, subcut (8) 5" squares

Backing: 3-1/8 yards
Batting: 54" x 64"

All seams are sewn with 1/4" seam allowance.
Press seams to darker fabric.
WOF=width of fabric

BLOCK CONSTRUCTION

See diagrams on page 4

Block Construction:

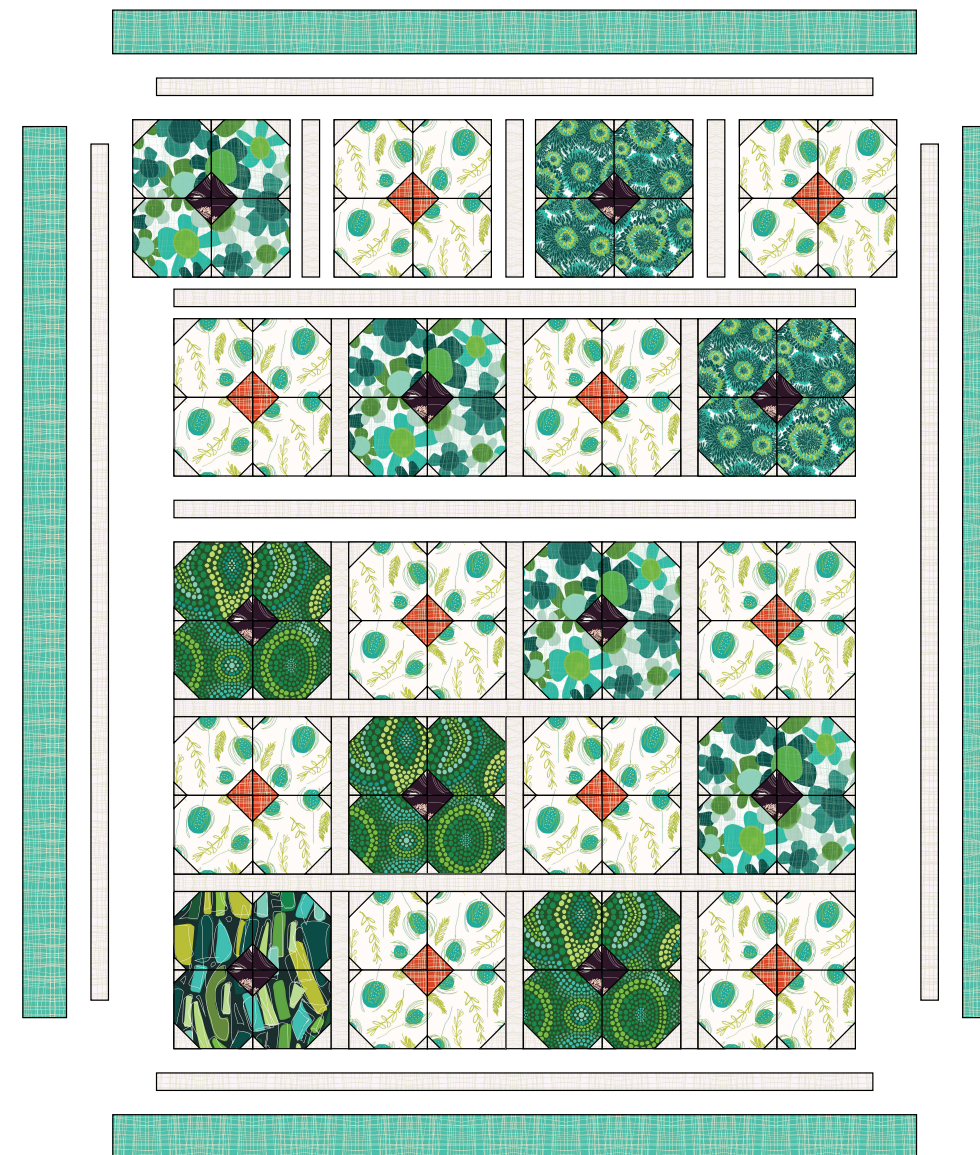
1. Draw a diagonal line across the wrong side of all the Fabric C 2" squares, Fabric F 2" squares, Fabric H 2" squares, and Fabric H 1-1/4" squares. #1
2. Arrange 1 each marked Fabric C and H 2" squares right sides together on opposite corners of a Fabric A 5" square. Stitch along the marked lines. Trim seam allowances to 1/4". Press triangles out. #2
3. Arrange 2 marked Fabric H 1-1/4" squares right sides together on remaining corners of the Fabric A 5" square from Step 2. Stitch along the marked lines. Trim seam allowances to 1/4". Press triangles out. Make a total of 4 units (5" square unfinished). Note the position of the corner triangles on each unit so the A fabric remains orientated in the same direction. #3
4. Arrange the 4 units together in 2 rows. Stitch into rows. Sew rows together to complete a block (9-1/2" square unfinished). #4
5. In the same manner, make the number of each block as shown. #5

QUILT Assembly

Quilt Assembly:

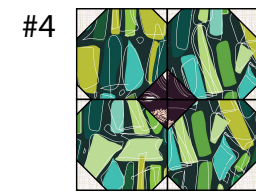
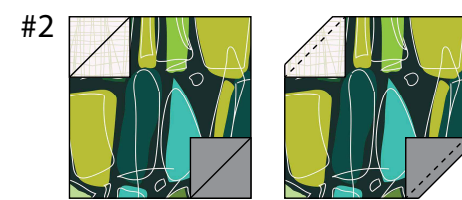
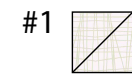
1. Place the backing fabric on a large flat surface wrong side up. Place the batting on top of the backing fabric. Place the quilt top right side up on the batting.
2. Baste layers together.
3. Machine or quilt as desired.
4. Trim excess backing and batting even with quilt top.
5. Bind with (6) Fabric G 2-1/2" strips.

Quilt Layout

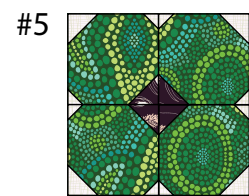


While careful proofing to ensure the accuracy of this pattern has been undertaken, we can not be responsible for printing errors or inaccurate piecing. This is due to variances in which individuals work. Please be sure to read all instructions carefully before starting to cut and construct this project.

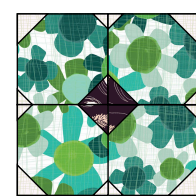
Remember to wash and press your fabrics prior to cutting.



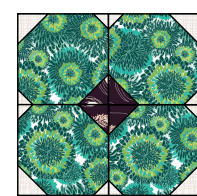
Make 1 Block



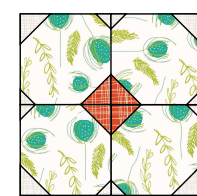
Make 3 Blocks



Make 4 Blocks



Make 2 Blocks



Make 10 Blocks

QUILT Construction

Quilt Construction:

1. Referring to Quilt Layout, arrange blocks in 5 rows of 4 blocks each alternating with Fabric H 1-1/2" x 9-1/2" sashing strips each. Stitch into rows.
2. Sew rows together alternating with Fabric H 1-1/2" x 39-1/2" sashing strips. Quilt center measures 39-1/2" x 49-1/2" (unfinished).
2. Stitch (3) Fabric H 1-1/2" x WOF strips together end to end. From this cut (2) 49-1/2" length borders. Sew these borders to right and left sides of quilt center. Add 1-1/2" x 41-1/2" Fabric H borders to top and bottom of quilt center.
3. Stitch (5) Fabric G 3" x WOF strips together end to end. From this cut (2) 51-1/2" and (2) 46-1/2" length borders. Sew the longer borders to right and left sides of quilt. Add shorter borders to top and bottom of quilt. Unfinished quilt top measures 46-1/2" x 56-1/2".