

Featuring Sweet Tea & Honey Bees by belle Haus

Tea Party Quilt

QUILT

52" x 67"
Blocks: 15" x 15"

Designed by Lisa Swenson Ruble



This is a digital representation of the quilt; fabric may vary.

FREE PATTERN



FABRIC REQUIREMENTS

- A  Tea Leaf Multi
ST3110-05
1-1/2 Yards
- B  Tea Leaf White
ST3110-02
5/8 Yard
- C  Honey Comb Yellow
ST3140-08
3/8 Yard
- D  Honey Comb Orange
ST3140-10, includes
binding
1 Yard
- E  Love Letters Blue
ST3180-07
3/8 Yard
- F  Love Letters Green
ST3180-09
3/8 Yard
- G  White solid
1-1/4 Yards



This pattern comes as a table runner too!

Visit rbstudiosco.com for the free pattern.

PLEASE READ ALL INSTRUCTIONS BEFORE BEGINNING

- * All seams are sewn with 1/4" seam allowance.
- * Press seams toward each added piece.
- * RST = right sides together

PLUS
Backing: 3-1/4 Yards Batting: 58" x 73"

CUTTING INSTRUCTIONS

Cutting based on 42" wide fabric (WOF-Width of Fabric)

From Fabric A cut:

- * (6) 9-1/2" squares
- * (7) 4" x WOF strips

From Fabric B cut:

- * (6) 9-1/2" squares

From Fabric C cut:

- * (18) 4" squares
- * (6) 3-1/2" squares

From Fabric D cut:

- * (18) 4" squares
- * (6) 3-1/2" squares
- * (7) 2-1/2" x WOF strips for binding

From Fabric E cut:

- * (18) 4" squares
- * (6) 3-1/2" squares

From Fabric F cut:

- * (18) 4" squares
- * (6) 3-1/2" squares

From Fabric G cut:

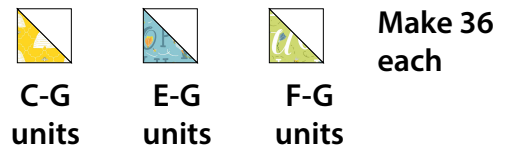
- * (72) 4" squares
- * (24) 3-1/2" squares

BLOCK CONSTRUCTION

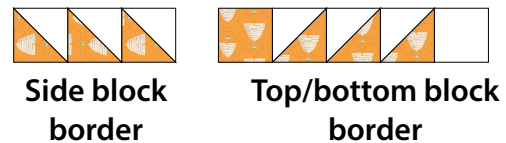
1. Draw a diagonal line on the wrong side of all 4" G squares. Lay one marked square right sides together on one C square. Sew 1/4" on each side of the drawn line. Cut on the line and press units open. Trim to measure 3-1/2" square. Make (36) D-G units.



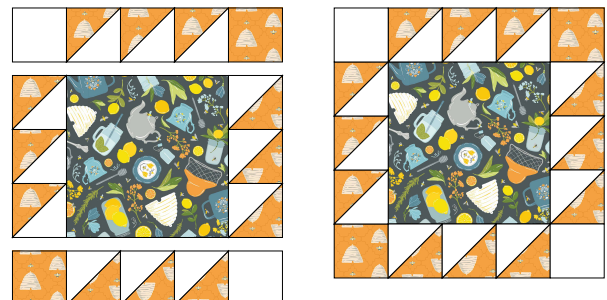
2. In the same way, make (36) each C-G, E-G and F-G units.



3. Sew together three D-G units to make a side block border. Make two. Sew together three D-G units, and then add one 3-1/2" D square to the left end and one 3-1/2" G square to the right end to make a top/bottom block border. Make two.



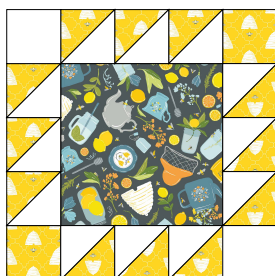
4. Sew side block borders to opposite sides of one 9-1/2" A square, noting orientation. Sew top/bottom block borders to the top and bottom to complete one block. Make three A-D blocks, measuring 15-1/2" square unfinished.



A-D blocks
Make 3

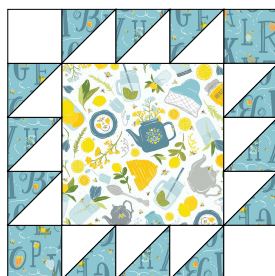
BLOCK CONSTRUCTION cont.

5. Repeat steps 3-4 to make three A-C blocks.

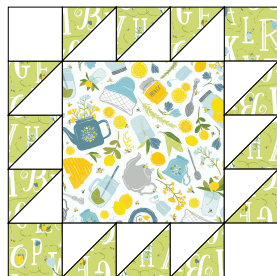


A-C blocks
Make 3

6. Repeat steps 3-4 to make three B-E and three B-F blocks.



B-E blocks
Make 3



B-F blocks
Make 3

QUILT ASSEMBLY

Follow the quilt layout diagram on the next page for sewing the blocks together.

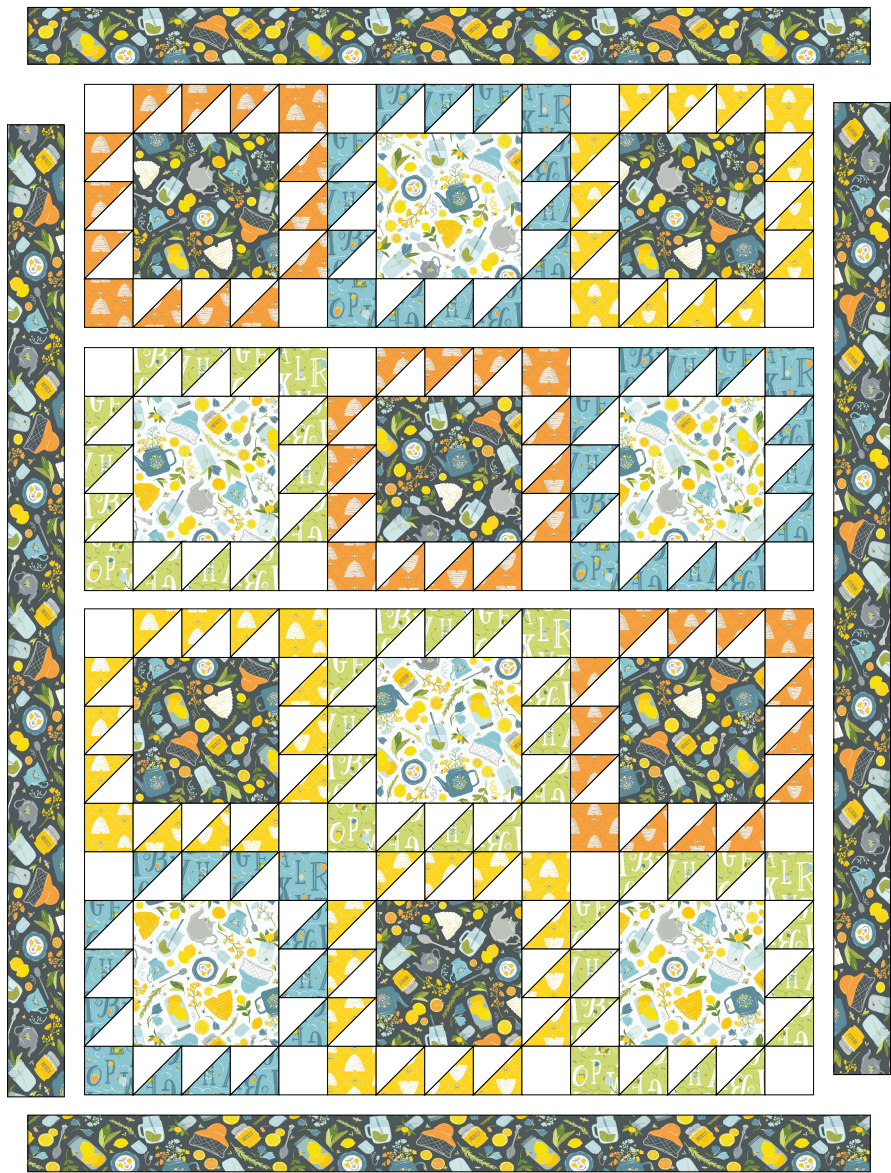
1. Lay out the blocks into four rows of three blocks each, noting orientation of the blocks. Sew the blocks into rows and join the rows to complete the quilt center.
2. Sew the six 4" x WOF A strips short ends together with diagonal seams. Press seams open.
3. Measure the quilt through the vertical center (top to bottom) of the quilt. Trim two strips to this length. Matching centers and ends, pin and sew to sides.
4. Measure the quilt through the horizontal center (side to side) of the quilt. Trim two strips to this length. Matching centers and ends, pin and sew to sides.

FINISHING

1. Cut backing fabric into (2) equal lengths and sew together to make the quilt back.
2. Layer top, batting and pieced backing. Baste if necessary and quilt as desired.
3. Sew the seven 2-1/2" x WOF D binding strips short ends together with diagonal seams. Press seams open. Fold in half lengthwise wrong sides together and sew to quilt with a French binding technique. Fold binding to back and hand sew down.

Be sure to put a label on the back and ENJOY!

QUILT LAYOUT



Quilt Layout Diagram



www.rbstudiosco.com

While careful proofing to ensure the accuracy of this pattern has been undertaken, we can not be responsible for printing errors or inaccurate piecing. Please be sure to read all instructions carefully before starting to cut and construct this project.

© Courtesy of RB STUDIOS, a division of Midwest Textiles & Supplies and Lisa Swenson Ruble. All Rights Reserved.