

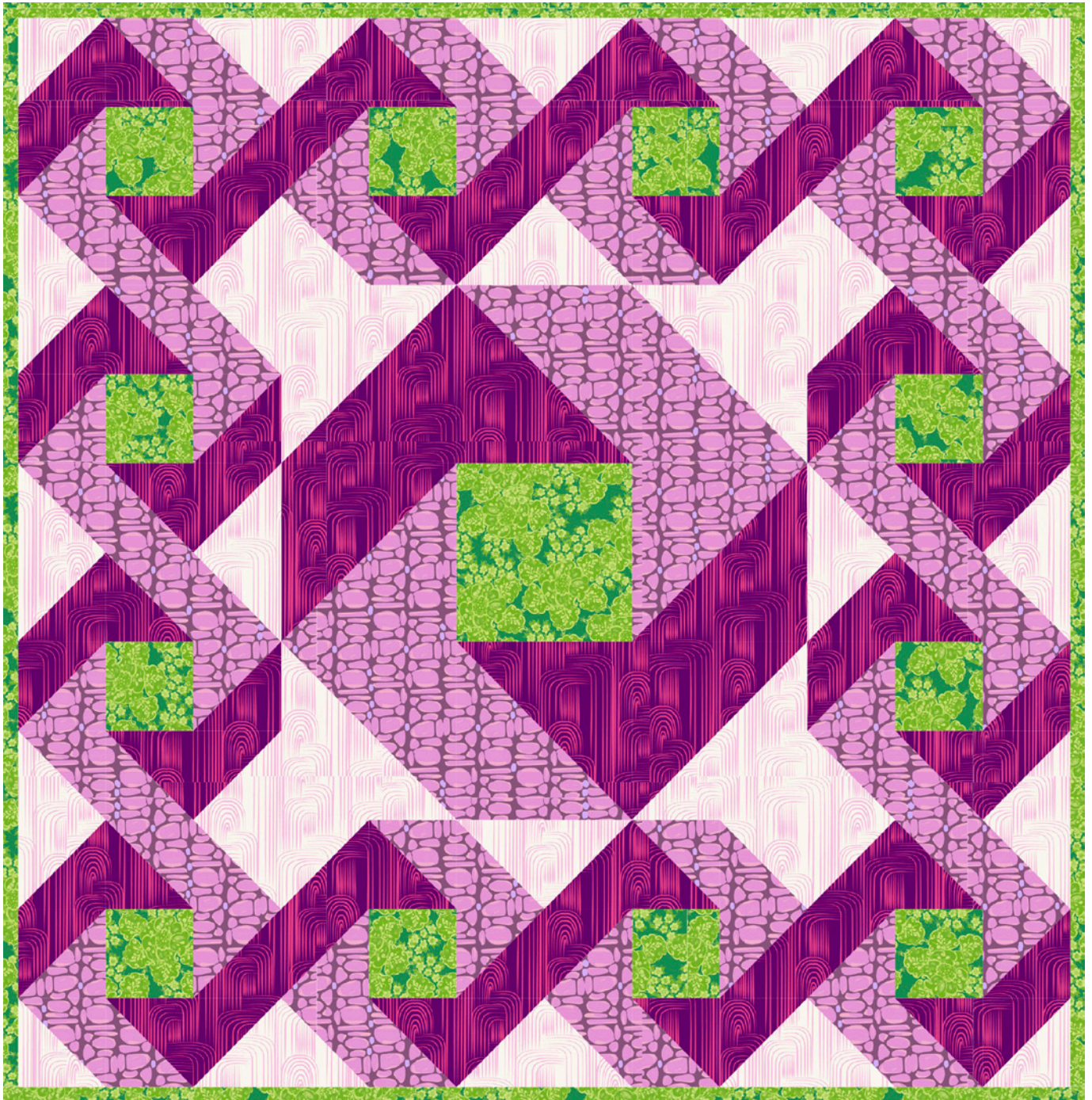
Featuring STUDIO PALETTES Collection by RB STUDIOS

Over & UNDER

WALL HANGING

Designed by Lisa Swenson Ruble

36" x 36"
91cm x 91cm



FREE PATTERN



Over & Under

WALL HANGING

Designed by Lisa Swenson Ruble

36" x 36"
91cm x 91cm

FABRIC REQUIREMENTS

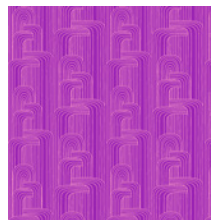


Choose 4 fabrics + backing fabric or as follows featuring STUDIO PAlettes



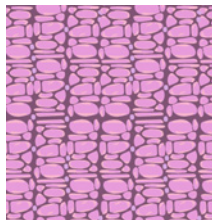
A

RBS-SP2392-14
PINK
2/3 Y / 60cm



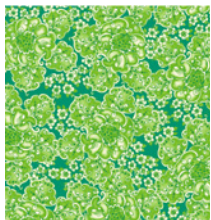
B

RBS-SP2392-11
VIOLET
1-1/8 Y / 1M



C

RBS-SP2390-14
PINK
7/8 Y / 80cm



D

RBS-SP2393-09
GREEN
1/2 Y / 45cm

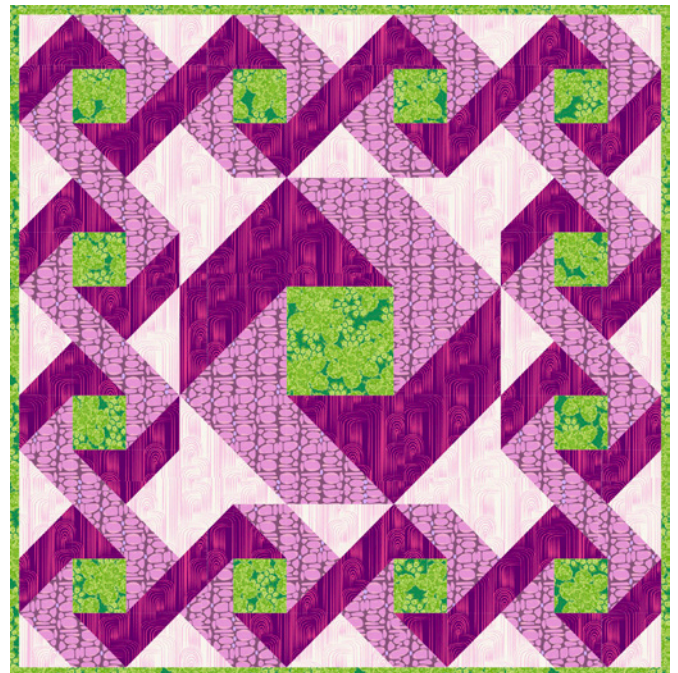


E

RBS-SP2391-20
TEAL
BACKING FABRIC
1-1/4 Y / 1.15M



42" / 106cm
SQUARE
Batting



CUTTING DIRECTIONS

1/4" / 6.5cm Seam Allowance

WOF: Width of the Fabric

FABRIC A: (2) 7" Squares
(24) 4" Squares

FABRIC B: (3) 7" Squares
(36) 4" Squares
(4) 2-1/4" x WOF for binding

FABRIC C: (3) 7" Squares
(36) 4" Squares

FABRIC D: (1) 6-1/2" Squares
(12) 3-1/2" Squares

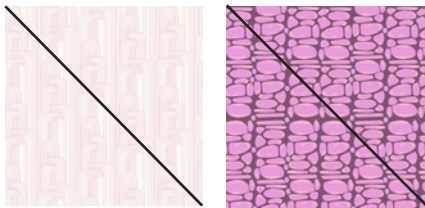
Binding Fabric Included RBS-SP2393-09 GREEN

CONSTRUCTION

MAKING THE BLOCK

HST: Half Square Triangle

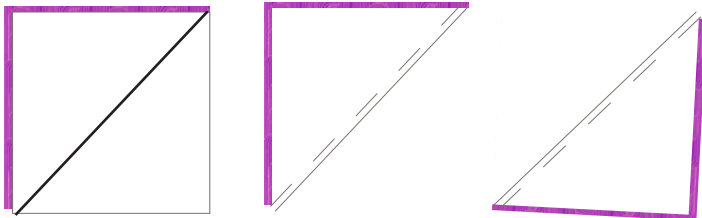
#1 Draw a diagonal line on the wrong side of the (36) 4" C Squares and (12) 4" A Squares



Mark 12

Mark 36

#2 Pair (1) Marked C square right sides together with (1) 4" B 'unmarked' square. Sew 1/2" on both sides of the drawn line, cut on the line, and press both HSTs open. Trim to measure 3-1/2" square. Make a total of (48) B-C units. In the same way, make (24) each of A-B and A-C units.



A-B Unit

B-C Unit

A-C Unit



Make 24



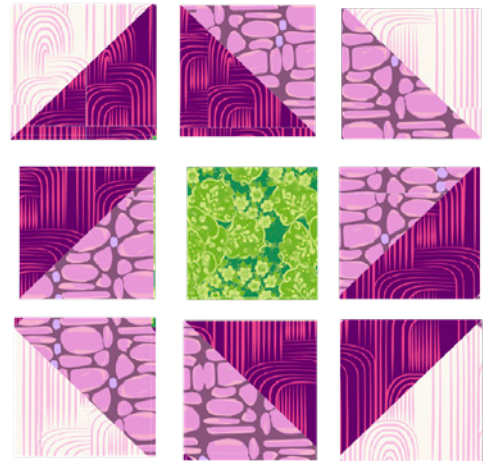
Make 48



Make 24

#3 Lay out (4) B-C Units, (2) each A-B and A-C Units, and (1) 3-1/2" D Square - into (3) rows of (3). Sew into rows and join the rows to complete the 9-1/2" square quilt block. Make (12).

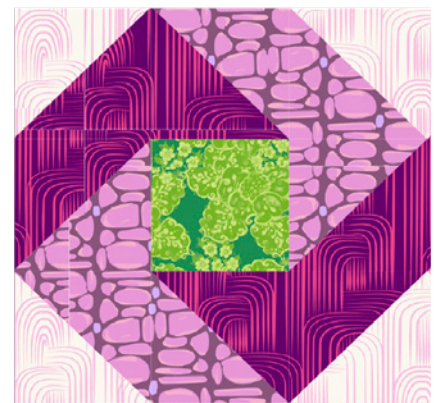
Make 12



#4 Using 7" A,B and C squares, make (2) each 6-1/2" squares A-B and A-C HST units, and (4) 6-1/2" square B-C HST units, referring to steps 1 and 2.

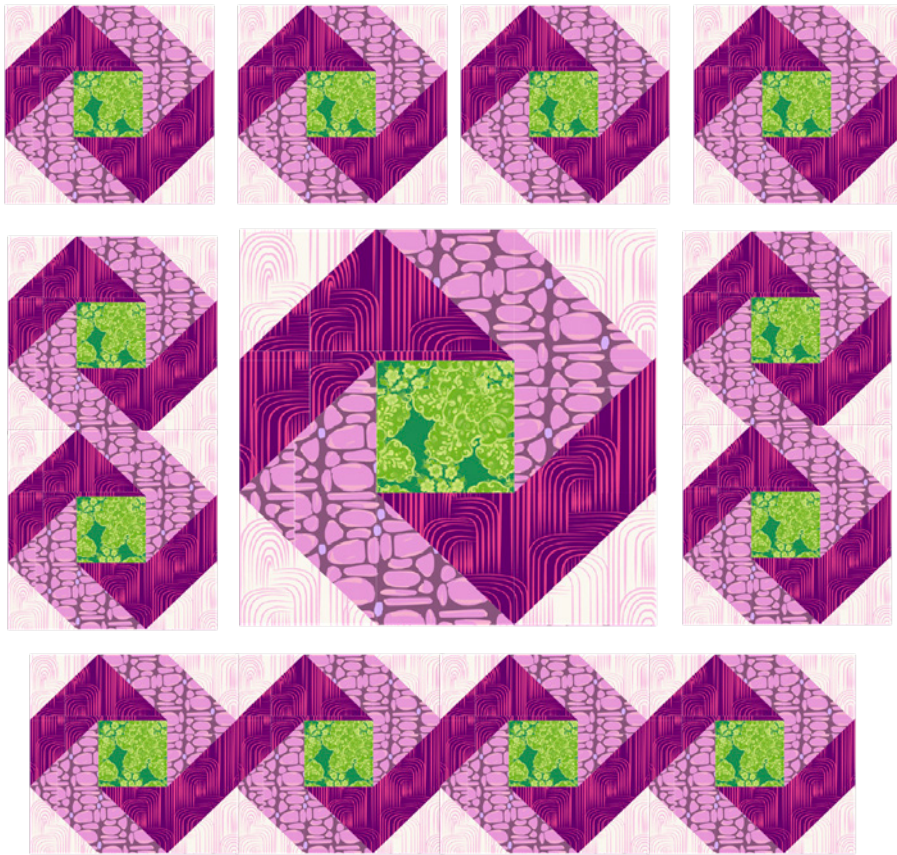
Lay out the HST units and (1) 6-1/2" square D square into (3) rows of (3).

Sew into rows and join the rows to complete the 18-1/2" square center block.



Center Block: Make 1

QUILT Layout



QUILT CONSTRUCTION

1. Lay out the (12) blocks and (1) center block as shown in the above diagram, noting the orientation. Sew blocks together in pairs and sew to opposite sides of the center block.
2. Sew (4) blocks together to make a top/bottom block row. Make (2). Sew to the top and bottom of the quilt center.

FINISHING THE QUILT

1. Layer quilt top, batting and backing. Quilt as desired.
2. Piece (4) 2-1/2" x WOF strips at short ends and bind quilt, see below.

QUILT Assembly

Sew Right Sides Together

- Place the BACKING fabric on a large flat surface wrong side upward. Stretch it flat with masking tape against the surface.
- Place the BATTING on top of the backing fabric.
- Place the TOP of the quilt onto the batting with the right side facing upward. Smooth away wrinkles using your hands.
- Pin all layers together and baste with basting thread, using long stitches. You can also use large safety pins to join the layers.
- Machine or hand quilt starting at the center and working towards the corners. This is a personal preference, so have fun.
- After you have finished, trim off excess of any fabric or batting, squaring the quilt to proceed to binding.

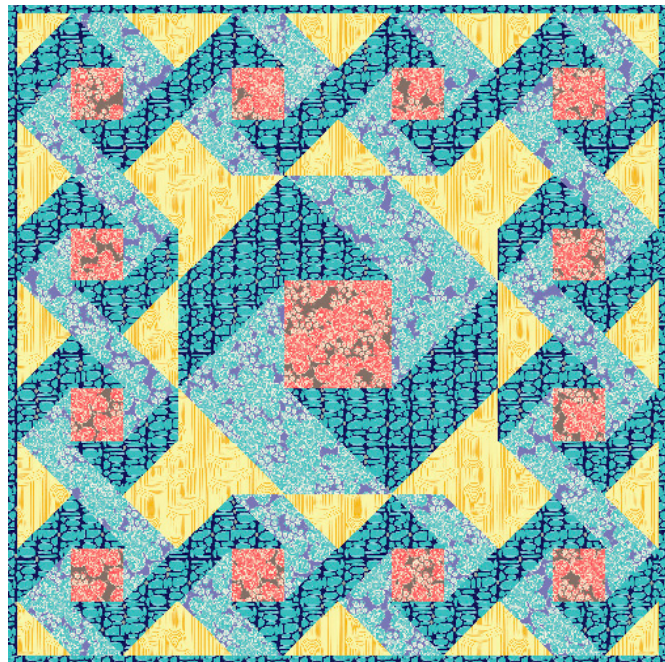
QUILT Binding

- Piece (4) 2-1/2" wide X WOF of Fabric B strips at short ends.
- Start sewing the binding strip in the middle of one of the sides of the quilt. Place the strip right sides of the quilt, placing the strip right side down and leaving approximately a 5" tail.
- Sew with 1/4" seam allowance (using a straight stitch) aligning the strip's raw edge with the quilt top's raw edge. Stitch around the quilt.
- Stop stitching before you reach the last 5-6".
- Lay the loose ends of the binding flat along the quilt edge, folding the ends back on themselves to form a crease where they meet. Stitch along this crease to join the ends.
- Complete sewing the binding onto the quilt edge.
- Turn the binding to the back of the quilt, turn the raw edge inside and stitch by hand using a blind stitch.

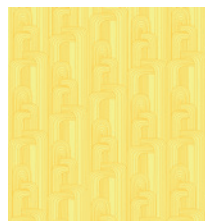
Enjoy!

ALTERNATE Colorway

Choose 4 fabrics + backing fabric or as follows featuring STUDIO PALETTES

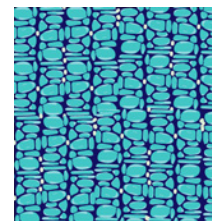


A



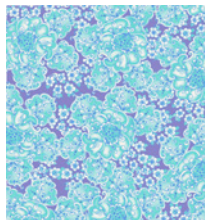
RBS-SP2392-8
YELLOW
2/3 Y / 60cm

B



RBS-SP2390-07
BLUE
1-1/8Y / 1M

C



RBS-SP2393-07
BLUE
7/8Y / 80cm

D



RBS-SP2393-33
CORAL
1/2Y / 45cm

E

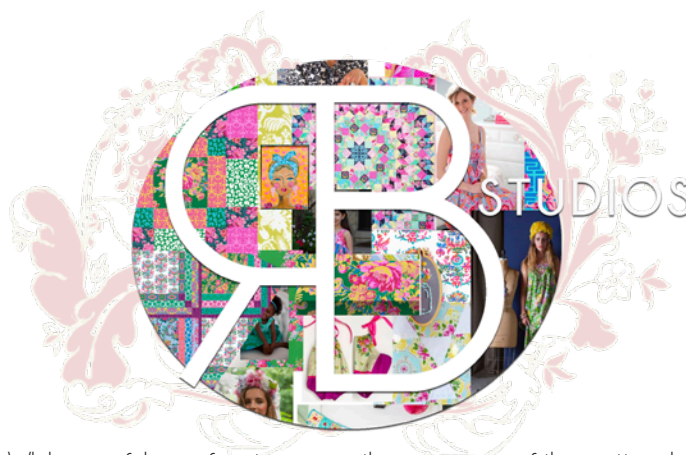


RBS-SP2391-03
CREAM
BACKING FABRIC
1-1/4Y / 1.15M

42" / 106cm
SQUARE
Batting

www.rbstudiosco.com

STUDIO
palettes



While careful proofing to ensure the accuracy of this pattern has been Undertaken, we can not be responsible for printing errors or inaccurate piecing. This is due to variances in which individuals work. Please be sure to read all instructions carefully before starting to cut and construct this project.

Remember to wash and press your fabrics prior to cutting.