

Globes Designed by Toby Lischko

FABRIC COLLECTION: Studio Palettes

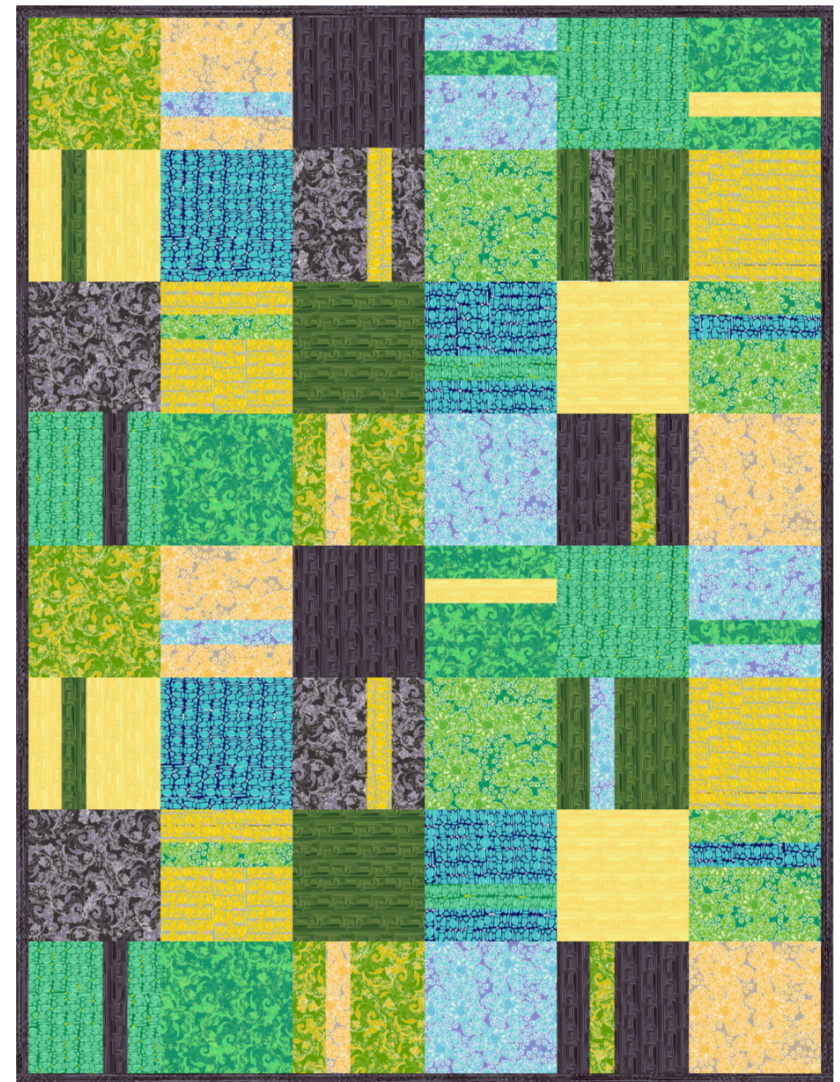
Fabric #	SKU and description	Yardage	Used in
1	SP2391/28 Ground-cover Lime Green	1/3 yard	Blocks
2	SP2391/20 Ground-cover Teal	1/3 yard	Blocks
3	SP2391/4 Ground-cover Charcoal	1/3 yard	Blocks
4	SP2393/8 Fortiny Yellow	1/3 yard	Blocks
5	SP2393/7 Fortiny Blue	1/3 yard	Blocks
6	SP2393/9 Fortiny Green	1/3 yard	Blocks
7	SP2390/7 Pebbles Blue	1/3 yard	Blocks
8	SP2390/8 Pebbles Yellow	1/3 yard	Blocks
9	SP2390/20 Pebbles Teal	1/3 yard	Blocks
10	SP2392/8 Maze Yellow	1/3 yard	Blocks
11	SP2392/9 Maze Green	1/3 yard	Blocks
12	SP2392/4 Maze Charcoal	7/8 yard	Blocks and binding

Backing: 3-1/4 yards

Batting: 54" x 70"

GLOBES QUILT 48" X 64"

Designed by Toby Lischko



Block size: 8" x 8"

FREE PATTERN



Quilt size: 48" x 64"

GLOBES

Block size: 8" x 8"

PLEASE READ ALL INSTRUCTIONS
BEFORE BEGINNING

General instructions:

- * All seams are sewn with 1/4" seam allowance.
- * Press in the direction of the arrows unless instructed otherwise.

Cutting Based on 42" wide fabric (WOF-Width of Fabric)

From each of Fabrics 1-12 cut:

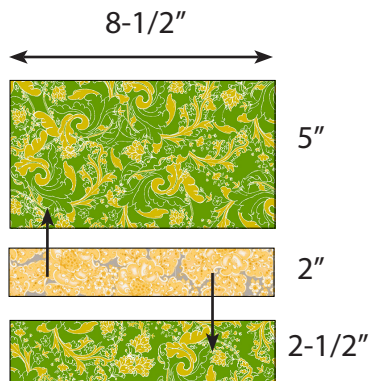
- * (1) 8-1/2" x WOF strip. Sub-cut into (2) 8-1/2" squares, (2) 5" x 8-1/2" rectangles, (2) 2-1/2" x 8-1/2" rectangles, and (2) 2" x 8-1/2" rectangles.

From Fabric 12 cut:

- * (6) 2-1/4" x WOF strips for the binding.

General Block Construction

1. Each pieced block consists of (1) 5" x 8-1/2" rectangle, (1) 2" x 8-1/2" rectangle and (1) 2-1/2" x 8-1/2" rectangle. The 5" and 2-1/2" rectangles are from the same fabric. You can either follow the quilt image of the blocks or use your own combination of fabrics. You will make (2) each of the same fabric combination which will give you (24) total pieced blocks.



Quilt construction

Follow the quilt layout on the following page for sewing the blocks (or use your own combination).

1. Layout 6 across and 8 down. Each row consists of (3) 8-1/2" squares and (3) pieced squares. Rotate the pieced blocks for a more visual effect.

2. Sew blocks together and press towards the squares.

3. Matching seams, sew rows together and press in one direction.

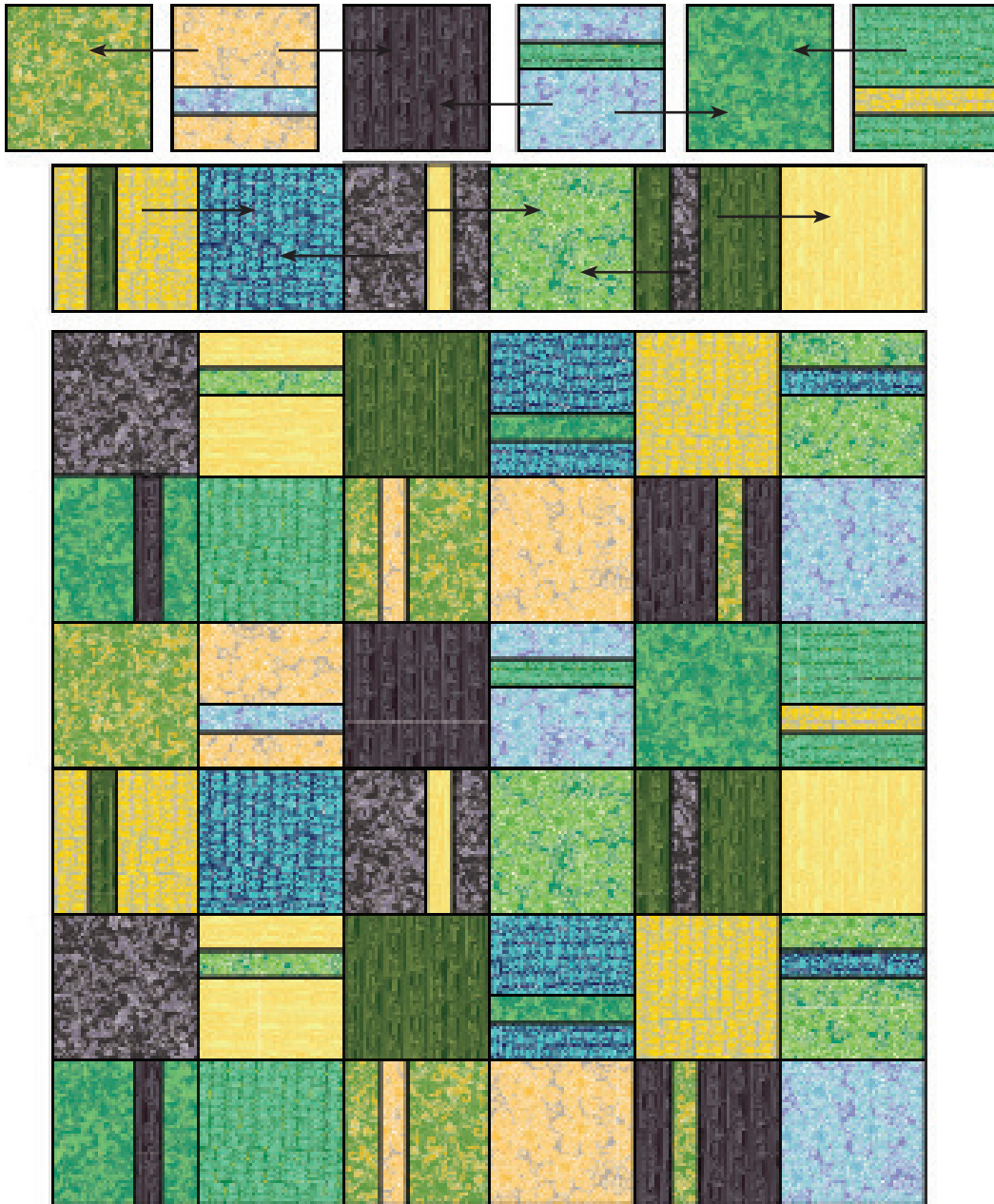
Finishing

Layer quilt top, batting and pieced backing.

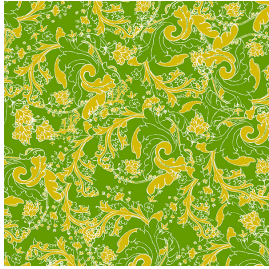
Sew the (6) 2-1/4" Fabric 12 binding strips short ends together with diagonal seams. Press seams open. Fold in half lengthwise wrong sides together and sew to front of quilt with a French binding technique. Fold binding to back and hand sew down.

Be sure to put a label on the back and ENJOY!

QUILT LAYOUT

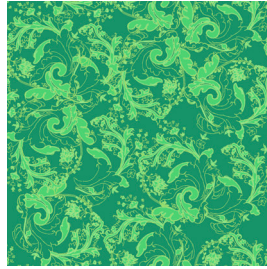


#1



SP2391/28 Ground-cover Lime Green

#2



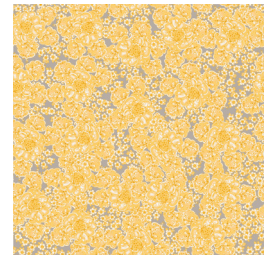
SP2391/20 Ground-cover Teal

#3



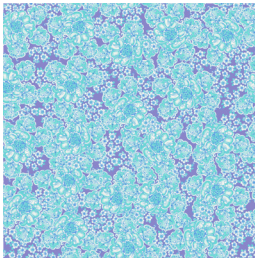
SP2391/4 Ground-cover Charcoal

#4



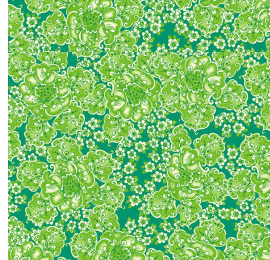
SP2393/8 Fortiny Yellow

#5



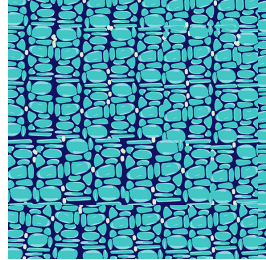
SP2393/7 Fortiny Blue

#6



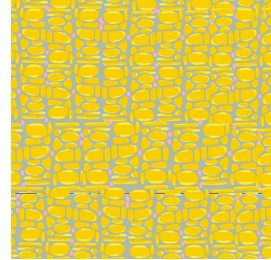
SP2393/9 Fortiny Green

#7



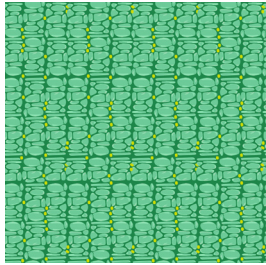
SP2390/7 Pebbles Blue

#8



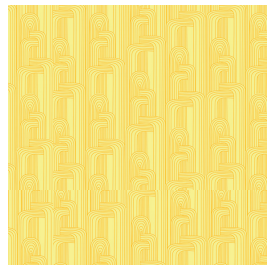
SP2390/8 Pebbles Yellow

#9



SP2390/20 Pebbles Teal

#10



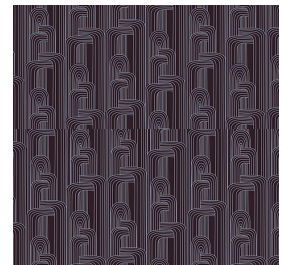
SP2392/8 Maze Yellow

#11



SP2392/9 Maze Green

#12



SP2392/4 Maze Charcoal