

Featuring Robert Drive by So Floral Rose

# Floral Promenade

QUILT

56" x 68"  
Blocks: 12" x 12"

Designed by Lisa Swenson Ruble



This is a digital representation of the quilt top; fabric may vary.

FREE PATTERN



## FABRIC REQUIREMENTS

- A  Morning Laughter Blue  
RD3760-07  
7/8 Yard
- B  Morning Laughter Cream  
RD3760-03  
7/8 Yard
- C  Painted Dais Rose  
RD3740-42  
1/3 Yard
- D  Painted Dais Charcoal  
RD3740-43  
1/3 Yard
- E  Picture Perfect Cream  
RD3720-03  
1/3 Yard
- F  Picture Perfect Navy  
RD3720-19  
7/8 Yard
- G  Tiny Daisies Cream  
RD3730-03  
1/2 Yard

- H  Tiny Daisies Tan  
RD3730-15  
1-1/2 Yards
- I  Wildflowers Gray  
RD3710-04  
1/3 Yard
- J  Wild Flowers Rose  
RD3710-42  
1/3 Yard

---

PLUS

Backing: 3-1/2 Yards    Batting: 62" x 73"

**PLEASE READ ALL INSTRUCTIONS  
BEFORE BEGINNING**

- \* All seams are sewn with 1/4" seam allowance.
- \* Press seams toward each added piece.
- \* RST = right sides together

## CUTTING INSTRUCTIONS

**Cutting based on 42" wide fabric  
(WOF-Width of Fabric)**

**From Fabric A cut:**

**\* (20) 6-1/2" squares**

**From Fabric B cut:**

**\* (20) 6-1/2" squares**

**From Fabric C cut:**

**\* (16) 3-1/2" squares**

**From Fabric D cut:**

**\* (16) 3-1/2" squares**

**From Fabric E cut:**

**\* (16) 3-1/2" squares**

**From Fabric F cut:**

**\* (40) 3-1/2" squares**

**\* (6) 1-1/2" x WOF strips**

**From Fabric G cut:**

**\* (40) 3-1/2" squares**

**From Fabric H cut:**

**\* (7) 3-1/2" x WOF strips**

**\* (7) 2-1/2" x WOF strips for binding**

**From Fabric I cut:**

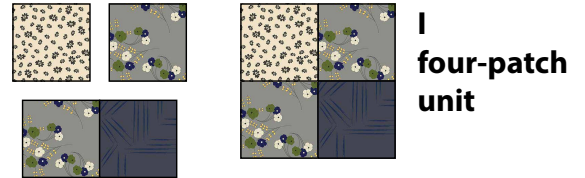
**\* (16) 3-1/2" squares**

**From Fabric J cut:**

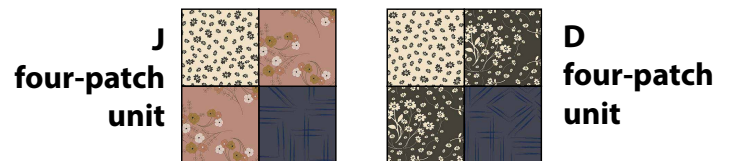
**\* (16) 3-1/2" squares**

## BLOCK CONSTRUCTION

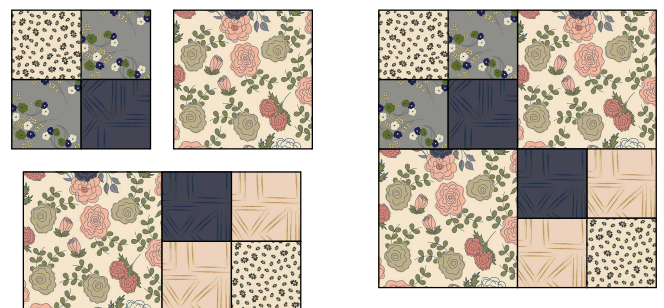
**1.** Lay out one each G and F 3-1/2" square and two I 3-1/2" squares into a four-patch. Sew the square into pairs and join the pairs to complete one I four-patch. Make eight.



**2.** In the same way, make eight each of the following four-patch combinations.

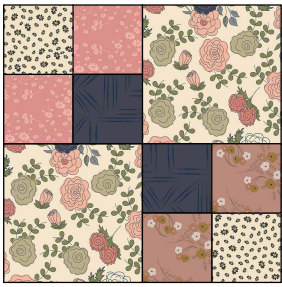


**3.** Lay out one I four-patch unit, one E four-patch unit, and two 6-1/2" B squares into a four-patch block. Sew into rows and join the rows to complete one B-E-I block.



**B-E-I block  
Make 1**

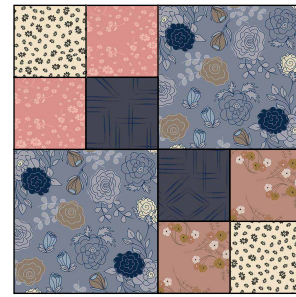
**4.** In the same way, make the indicated number of each block combination shown on p. 3 using 6-1/2" B squares.



**B-C-J block**  
Make 3



**B-D-I block**  
Make 4

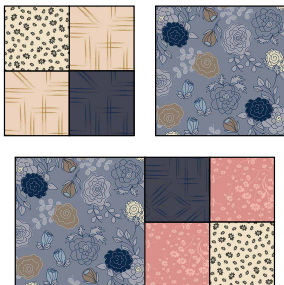


**A-C-J block**  
Make 1



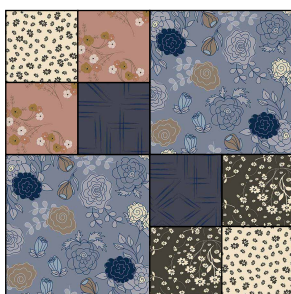
**B-C-E block**  
Make 2

5. Lay out one E four-patch unit, one C four-patch unit, and two 6-1/2" A squares into a four-patch block. Sew into rows and join the rows to complete one A-C-E block. Make two.

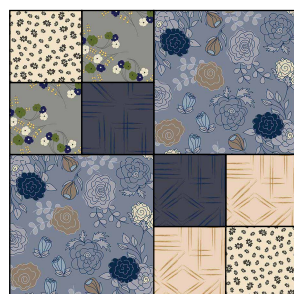


**A-C-E block**  
Make 2

6. In the same way, make the indicated number of each block combination using 6-1/2" A squares.



**A-D-J block**  
Make 4



**A-E-I block**  
Make 3

## QUILT ASSEMBLY

1. Lay out the blocks into five rows of four blocks each, noting block placement to create diagonal lines of each print as shown in the Quilt Layout. Sew the blocks into rows and join the rows to complete the quilt center.

2. Sew the six 1-1/2" x WOF F strips short ends together into a long strip. Measure the quilt length through the center and cut two strips to that length. Sew to opposite sides of the quilt. Measure the quilt width through the center and cut two strips to that length. Sew to the top and bottom of the quilt.

3. Sew the seven 3-1/2" x WOF H strips short ends together into a long strip. Measure, cut and add borders in the same manner as for inner border.

## FINISHING

1. Cut backing fabric into (2) equal lengths and sew together along short edges to make the quilt back.

2. Layer top, batting and pieced backing. Baste if necessary and quilt as desired.

3. Sew the seven 2-1/2" x WOF H binding strips short ends together with diagonal seams. Press seams open. Fold in half lengthwise wrong sides together and sew to quilt with a French binding technique. Fold binding to back and hand sew down.

***Be sure to put a label on the back and ENJOY!***

# QUILT LAYOUT



[www.rbstudiosco.com](http://www.rbstudiosco.com)

While careful proofing to ensure the accuracy of this pattern has been undertaken, we can not be responsible for printing errors or inaccurate piecing. Please be sure to read all instructions carefully before starting to cut and construct this project.

© Courtesy of RB STUDIOS, a division of Midwest Textiles & Supplies and Lisa Swenson Ruble. All Rights Reserved.