

A QUILT DESIGN BY

Emma Lea Creative

# Modern Birds



This generous throw size quilt, uses the traditional Drunkard's Path block in unexpected ways to make stylized birds with simply fun personality.

Created for the Finch & Fern Fabric Collection by Emma Lea Creative for RB Studios of Midwest Textiles.





# Modern Birds

A Pieced Lap Quilt  
Approximately 63" x 75"  
Finished Size

## Fabric Requirements & Cutting List

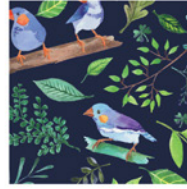
Refer to Step 1 for cutting instructions.

FQ = Fat Quarter wof = Width of Fabric



### A. Fern Fling (FQ)

4 Wedges  
1 Arc  
1 Bird Wing Appliqué  
2 Baby Bird Head Appliqués



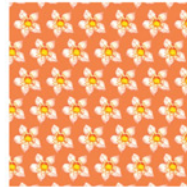
### G. Finch Fest Evening (FQ + 1yd or 1 1/4 yd)

3 Wedges  
Outer Borders: 5 wof Strips 6 1/2" Wide



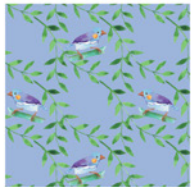
### B. Leaf Lattice (FQ)

2 Wedges  
7 Leaf Appliqués



### H. Blossom Box Step Orange (FQ)

2 Wedges  
1 Bird Tummy Appliqué  
Inner Border: 2" x 14" rectangle



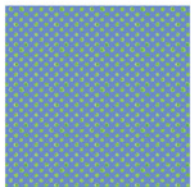
### C. Finch & Frond (FQ)

4 Wedges



### I. Footprint Scatter Sand (2 yds)

23 - 6 1/2" Squares  
32 Arcs  
Inner Borders: 6 wof Strips 2" Wide



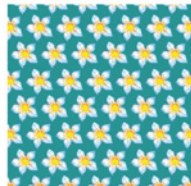
### D. Dot Polka Sky (FQ)

3 Wedges  
1 Baby Bird Head Appliqué  
1 Bird Wing Appliqué



### J. Finch Fest Sand (1/2 yd)

12 - 6 1/2" Squares



### E. Blossom Box Step Blue (FQ)

3 Wedges



### K. Square Dance Bloom (1/2 yd)

12 - 6 1/2" Squares



### F. Leaf Toss (FQ)

6 Wedges



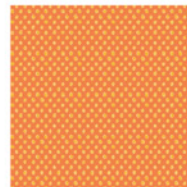
### L. Footprint Scatter Mud (FQ)

2 Wedges  
1 - 6 1/2" Square



### G. Dot Polka Lime (3/4 yd)

4 - 6 1/2" Squares  
Binding: 7 wof Strips 2 1/2" Wide



### M. Dot Polka Orange (FQ)

6 - 2 1/2" Squares  
3 Baby Bird Beak Appliqués

**\*\*Also requires 4 yds your choice of Backing Fabric  
70" x 80" Batting  
Fusible Webbing (such as Steam a Seam Lite 2)**

A QUILT DESIGN BY

Emma Lea Creative

# Modern Birds

## Quilt Assembly Instructions

### Step 1: Templates & Cutting

Print the template pages onto cardstock or trace pieces on template plastic and accurately cut out on the lines to create your templates.

Use the templates and marking pens to trace around the templates onto the fabric according to the chart on page 1. Use a gel pen in a contrasting color and trace on the front or back of the fabric, whichever side is easiest to see your markings. Be sure to keep the straight sides of the pieces on the straight of grain. Using a scissors or a small rotary cutter, cut out the appropriate number of pieces. Your pieces will be most accurate if you cut off the markings, just inside the lines.

Use the Quilt Diagram to pair together the wedges and arcs by block. Pay close attention to the blocks that have appliqué and piece what is underneath. For example, the top left bird's tummy is an appliqué. The bottom right block of that bird is a *Fern Fling* wedge paired with a *Footprints Sand Arc* and the next bird's tail is a *Blossom Box Step Blue Wedge* with a *Footprints Sand Arc*, etc.

Trace the appliqué shapes onto fusible webbing and fuse to the back of your fabric (or if using Steam a Seam Lite 2, simply stick the fusible onto the fabric). Cut out the shapes.

### Step 2: Curved Piecing (Drunkard's Path Blocks)

Fold Arc in half and finger press a small mark in the center of the inner arch. Press Wedge in half and finger press a mark in the center of the rounded side. Set the Wedge on a flat surface right side up. Place Arc right side down on the Wedge, matching the center marks. Pin (Photo 1). Line up the short edge of the Arc to the straight of the Wedge and pin (Photo 2). Gently easing the Arc into place, match the full edges of both pieces and pin well (Photo 3). Sew the two pieces together. Sew slowly and watch for tucks near the needle. Use a stiletto to smooth out the fabric, if needed.

Repeat to sew all the background Arcs to all the Wedges. Press toward the Wedge. You will not need to clip the curves. Press these blocks gently, trying not to distort the edges, but making sure you have a nice and flat block before proceeding. The edges may not be perfectly square, but that's ok. They are made larger so you can trim them to size. Square up all Drunkard's Path blocks, making sure the edges of the Wedge are  $\frac{1}{4}$ " from the corners and there is just  $\frac{1}{4}$ " background fabric on those two corners (Photo 4). Trimmed blocks should measure  $6\frac{1}{2}$ " square.

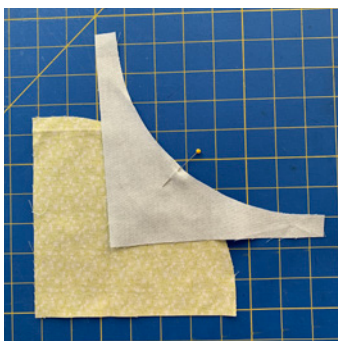


Photo 1



Photo 2

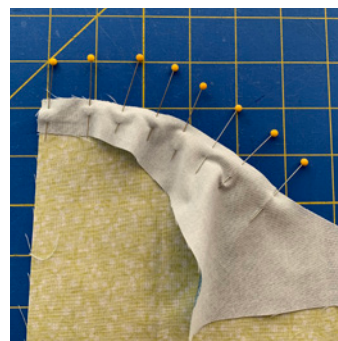


Photo 3

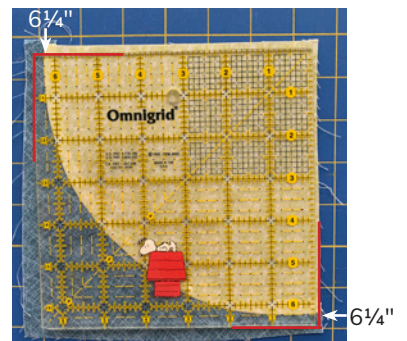


Photo 4

## Step 3: Beaks

Draw diagonal lines from one corner to the opposite corner on the wrong side all of 2½" Dot Polka Orange squares. Place an orange square face down onto one corner of the right side of a background 6½" block with the diagonal line facing up and not pointing to the corner (snowball corners). Sew on the drawn line. Trim ¼" away from the sewing line, cutting the corner off the square and press toward the orange triangle. Repeat snowball corners for 6 beak blocks.

## Step 4: Layout & Appliqué

Fuse the leaf pieces to the centers of the blocks at a diagonal. There should be approximately ¼" space between the leaf and the corners of the block. Finish the raw edges with your desired stitch. I used a little zig zag with a thread color matching the appliqué.

Begin sewing the quilt together in rows according to the Quilt Diagram. Press rows with the seam allowances in opposite directions for each row (i.e. odd rows to the right, even rows to the left). Don't sew all the rows together until after you have attached the appliqué pieces and finished the raw edges, for ease of handling under your machine. See side note.

## Step 5: Borders

### Inner Border

Start with the top border. Measure the width of the sun, add ½" to that measurement and trim the 2" rectangle of Blossom Box Step Orange that measurement. Measure your top from the sun to the left edge. Add ¼" to that measurement and cut a strip of background fabric. Sew the background strip to the sun strip on the short side. Sew this to be the top border. Measure your sides and add side borders. (Note: If your side measurements are slightly different, use an average of the two measurements to cut your side borders and ease into place.) Measure the bottom of the quilt and add the bottom border. When sewing these long sides, pin well, first at the ends and center, then in between.

### Outer Border

Sew all the Finch Fest Evening borders together on the short sides making one long border piece you will cut from. Measure the two sides of the quilt top and cut two side borders to the average of the side measurement. Also measure the top and bottom of the quilt top before sewing on the side borders. Cut the top and bottom borders to that average measurement. Sew the side borders to the quilt top first. Then sew the corner leaf blocks to each short end of the top and bottom borders, with the leaves facing diagonally outward according to the diagram. Sew the top and bottom borders onto the quilt top.

## Step 6: Backing and Finishing

Use yardage to create a back 6-10" larger than the top. (Cut a 4-yd piece of fabric into two 2-yd pieces. Trim off the selvages and sew two long trimmed edges together.) Sandwich the quilt top, batting and backing using your preferred method. Quilt as desired. Bind quilt with Dot Polka Lime strips.

**NOTE:** Best order for appliqué and assembly

Sew together row 1 and 2. Attach wing appliqué with the top tip right at the intersection of the 4 blocks and match the diagonal.

Piece row 6 separately. Appliqué the baby birds to the three blocks to the left of the mama bird head with a little of each head hanging off the bottom of the row. Be sure to tuck the beaks under the head circle before fusing the head down completely.

Sew together Rows 6 and 7. Then appliqué the mama bird's wing right at the intersection of the four body pieces.

Complete sewing the rows together.



# Modern Birds

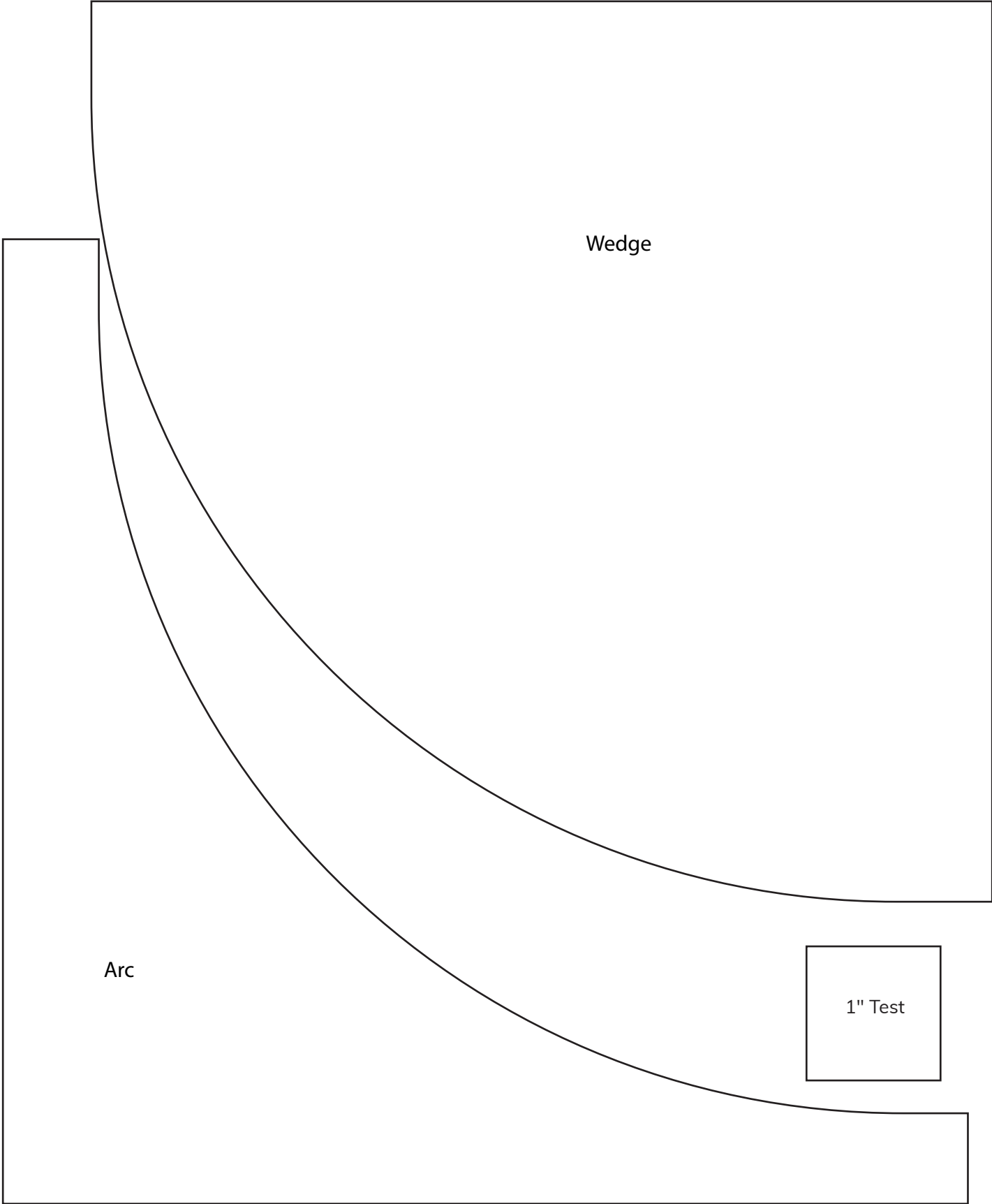


A QUILT DESIGN BY

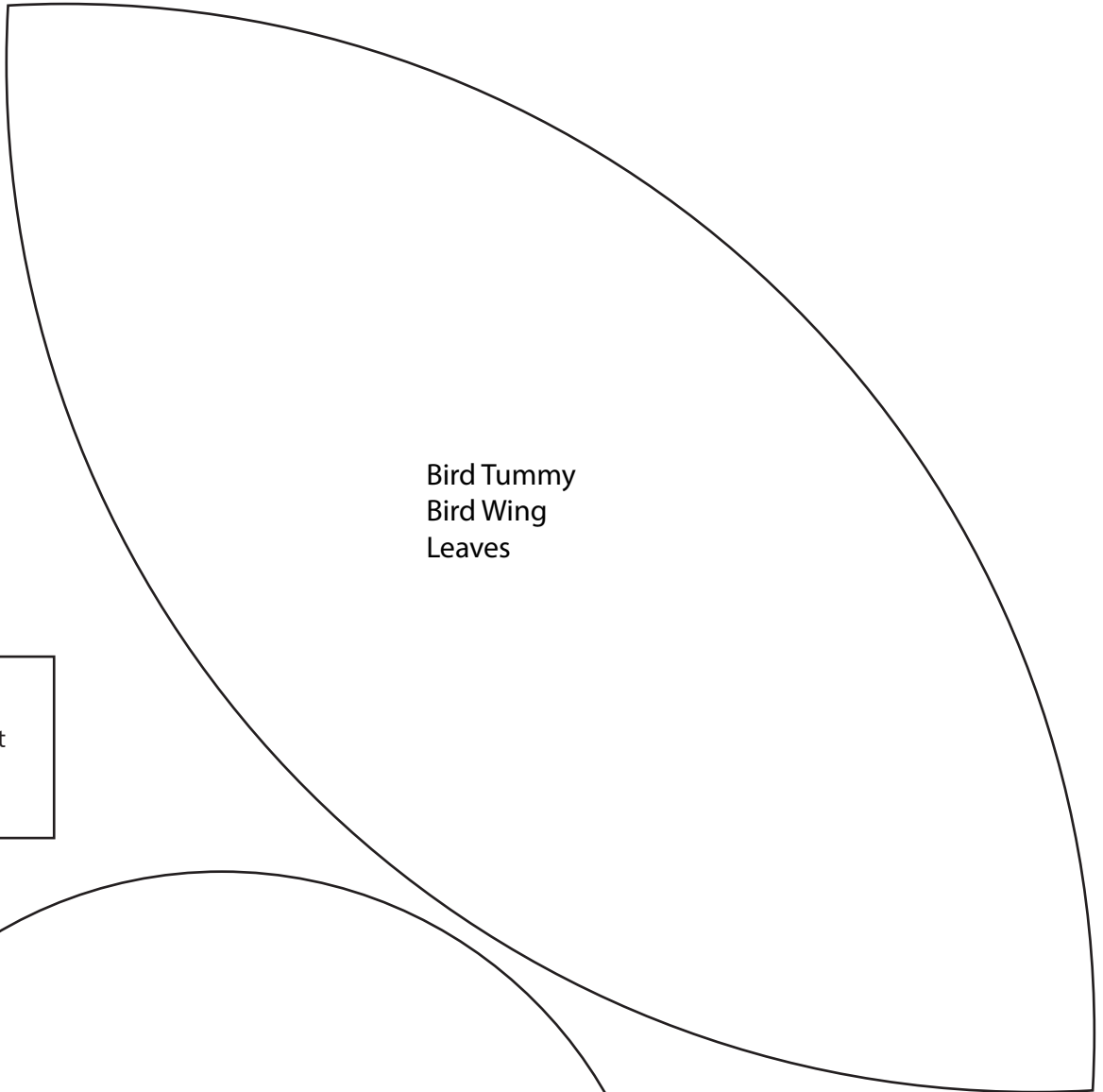
Emma Lea  Creative



# Modern Birds



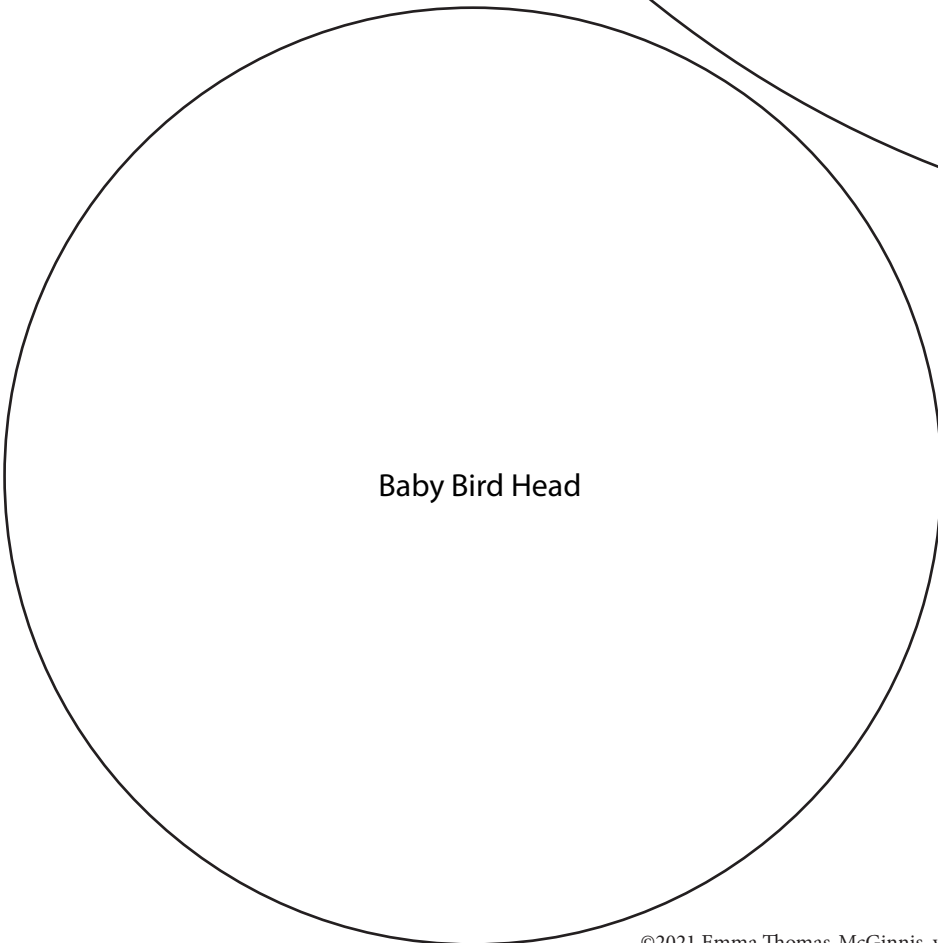
# Modern Birds



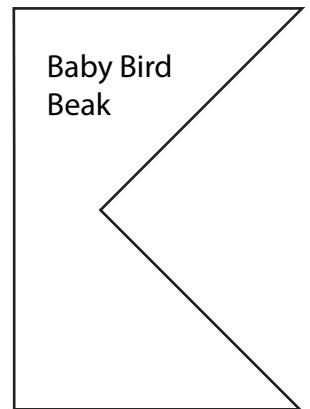
Bird Tummy  
Bird Wing  
Leaves



1" Test



Baby Bird Head



Baby Bird  
Beak