

Featuring Finch & Fern by EMMA LEA CREATIVE

# *Fly Home*

QUILT

32" x 32"

Blocks: 8" x 8"

Designed by Toby Lischko



FREE PATTERN




# Featuring FINCH & FERN by EMMA LEA CREATIVE

## FABRIC REQUIREMENTS


A  Blossom Box Step  
Blue  
FF2810-07  
1/2 Yard


B  Blossom Box Step  
Orange  
FF2810-10  
1/2 Yard


C  Dot Polka Blue  
FF2820-07  
1/3 Yard


D  Dot Polka Orange  
FF2820-10  
3/4 Yard

E  Finch & Frond Blue  
FF2840-07  
3/8 Yard

F  Finch Fest Day  
FF2850-03  
3/8 Yard

G  Finch Fest Evening  
FF2850-19  
1/4 Yard

H  Footprint Scattered  
Brown  
2860-16  
1/8 Yard

I  Square Dance Lime  
2800-42  
1/4 Yard

---

PLUS  
Backing: 1 Yard

Batting: 38" x 38"

### PLEASE READ ALL INSTRUCTIONS BEFORE BEGINNING

- \* All seams are sewn with 1/4" seam allowance.
- \* Press seams to darker fabric.
- \* Templates include seam allowance.
- \* RST = right sides together



## CUTTING INSTRUCTIONS

### ***Cutting based on 42" wide fabric (WOF-Width of Fabric)***

#### ***From Fabric A cut:***

***\* (4) 8-1/2" squares***

#### ***From Fabric B cut:***

***\* (4) 8-1/2" squares***

#### ***From Fabric D cut:***

***\* (4) 4-1/2" x 8-1/2" rectangles for roofs***

***\* (4) 2-1/2" x WOF strips for binding***

#### ***From Fabric E cut:***

***\* (4) 4-1/2" x 6-1/2" rectangles for houses***

***\* (8) 4-1/2" squares for sky***

***\* (8) 1-1/2" x 4-1/2" rectangles for sky***

#### ***From Fabric F cut:***

***\* (8) 4-1/2" squares for sky***

***\* (8) 1-1/2" x 4-1/2" rectangles for sky***

#### ***From Fabric G cut:***

***\* (4) 4-1/2" x 8-1/2" rectangles for roofs***

#### ***From Fabric I cut:***

***\* (4) 4-1/2" x 6-1/2" rectangles for houses***

## BLOCK CONSTRUCTION

### ***Bird Blocks***

**1.** On the paper side of fusible web, trace the following number of each appliqué with at least 1/2" between groups of similar shapes. Roughly cut out each shape, or group of shapes, with 1/4" around them:

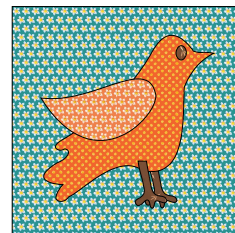
- 4 wings
- 4 reverse wings
- 4 birds
- 4 reverse birds
- 8 holes
- 8 eyes
- 8 feet
- 8 reverse feet

**2.** Press fusible web with appliqué shapes to wrong side of the fabrics indicated:

- **Fabrics A and B:** 2 wings and 2 reverse wings on each fabric
- **Fabrics C and D:** 2 birds and 2 reverse birds on each fabric
- **Fabric H:** 8 holes, 8 eyes, 8 feet, and 8 reverse feet

**3.** Cut out each appliqué shape along marked lines. Set aside cut out H holes for house blocks.

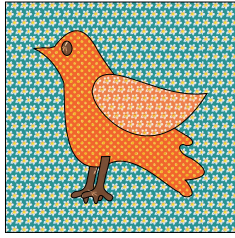
**4.** Arrange one D bird, 1 B wing, 1 H eye, and 1 each H and H reverse feet centered as shown on (1) A 8-1/2" square. Layer the back foot behind the bird. Press the appliqués in place. Make (2) of Block #1 (8-1/2" square unfinished).



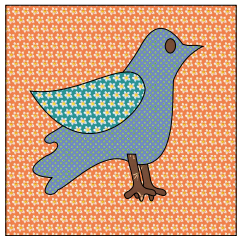
Make 2 of Block #1

## BLOCK CONSTRUCTION cont.

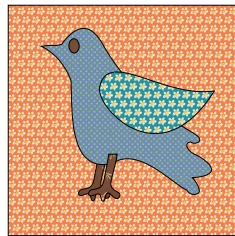
5. In the same manner, make 2 each of Blocks #2, #3, and #4.



Make 2 of Block #2



Make 2 of Block #3

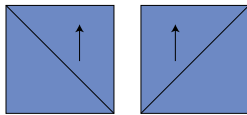


Make 2 of Block #4

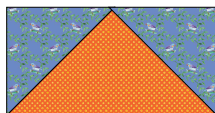
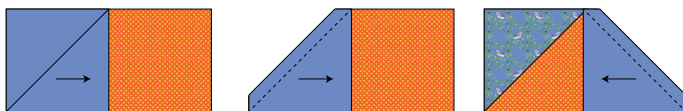
6. Hand or machine stitch, with a decorative stitch, around all raw edges of appliqué pieces in all blocks to secure edges.

### House Blocks

1. Draw a diagonal line across the wrong side of the E 4-1/2" squares, four in one direction and four in the opposite direction. In the same manner, mark the F 4-1/2" squares.



2. Arrange a marked E 4-1/2" square as shown on a D 4-1/2" x 8-1/2" piece. Stitch along the marked line. Trim seam allowance to 1/4". Press corner out. Repeat on the opposite corner. Make a total of 4 D Roofs (4-1/2" x 8-1/2" unfinished).



Make 4 D Roofs

3. In the same manner, make 4 G Roofs with marked F 4-1/2" squares and G 4-1/2" x 8-1/2" pieces.



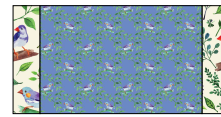
Make 4 G Roofs

4. Stitch an I 4-1/2" x 6-1/2" piece between two E 1-1/2" x 4-1/2" pieces as shown. Make a total of 4 I Houses (4-1/2" x 8-1/2" unfinished).



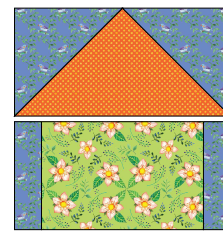
Make 4 I Houses

5. Sew a E 4-1/2" x 6-1/2" piece between two F 1-1/2" x 4-1/2" pieces as shown. Make a total of 4 E Houses (4-1/2" x 8-1/2" unfinished).



Make 4 E Houses

6. Stitch a D Roof on top of an I House. Make 4 of Block #5 (8-1/2" square unfinished).



Make 4 of Block #5

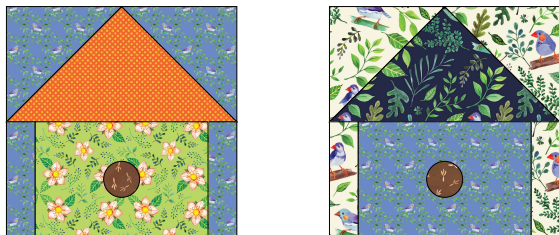
7. Stitch a G Roof on top of an E House. Make 4 of Block #6 (8-1/2" square unfinished).



Make 4 of Block #6

## BLOCK CONSTRUCTION cont.

8. Arrange a Fabric H hole centered on bottom half of Blocks #5 and #6. Press the appliques in place following manufacturer's directions. Stitch to secure edges.



## FINISHING

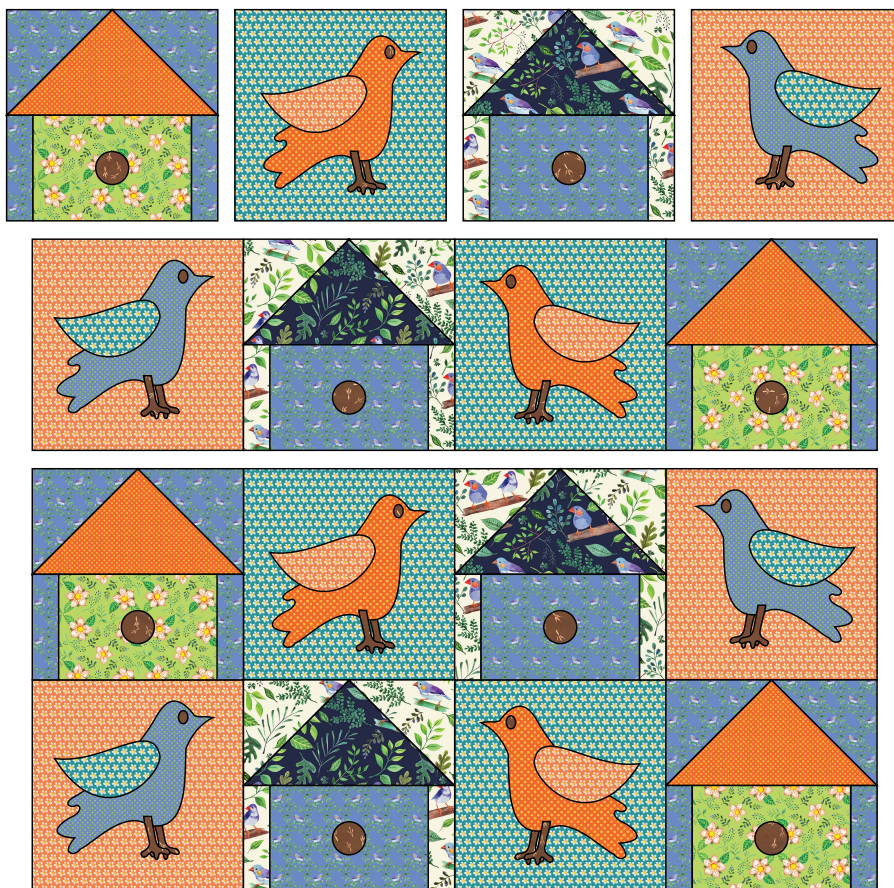
1. Layer top, batting and pieced backing. Baste if necessary and quilt as desired.

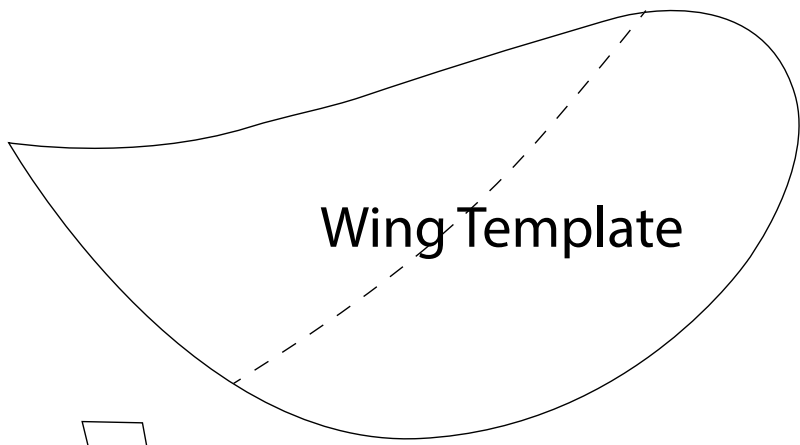
2. Sew the (4) 2-1/2" x WOF D binding strips short ends together with diagonal seams. Press seams open. Fold in half lengthwise wrong sides together and sew to quilt with a French binding technique. Fold binding to back and hand sew down.

***Be sure to put a label on the back and ENJOY!***

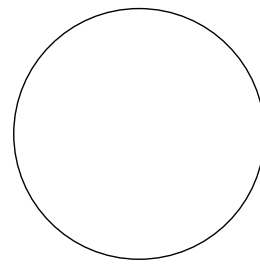
## QUILT ASSEMBLY

1. Referring to the Quilt Layout Diagram, arrange blocks in 4 rows of 4 blocks each. Stitch into rows. Sew rows together. Quilt should measure 32-1/2" x 32-1/2" (unfinished).

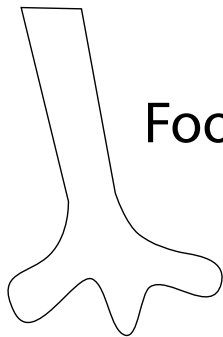




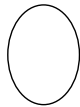
Wing Template



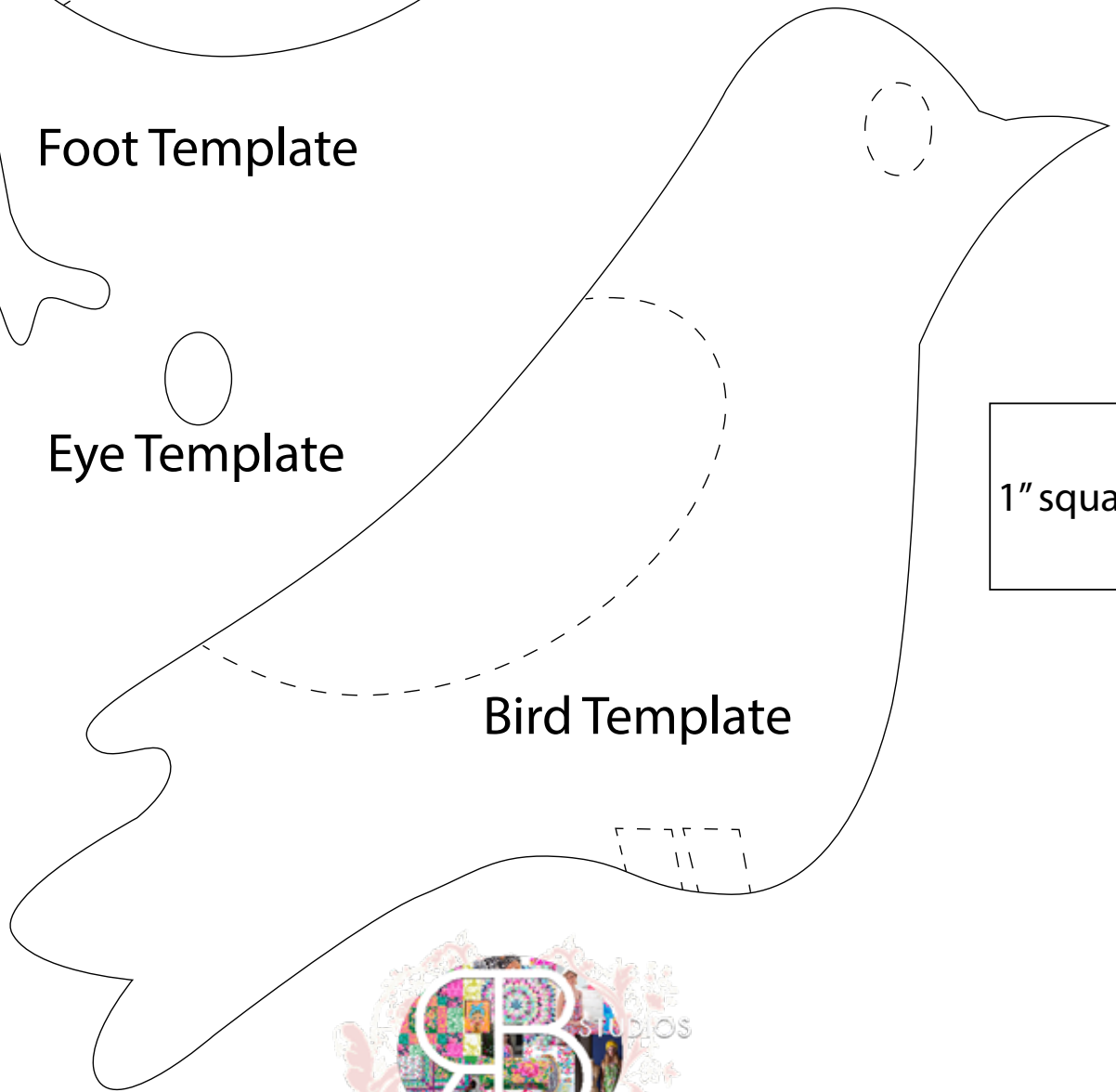
Hole Template



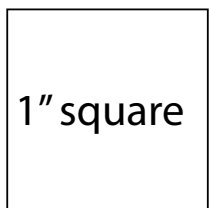
Foot Template



Eye Template



Bird Template



1" square



[www.rbstudiosco.](http://www.rbstudiosco.)

While careful proofing to ensure the accuracy of this pattern has been undertaken, we can not be responsible for printing errors or inaccurate piecing. Please be sure to read all instructions carefully before starting to cut and construct this project.

© Courtesy of RB STUDIOS, a division of Midwest Textiles & Supplies and Toby Lischko. All Rights Reserved.